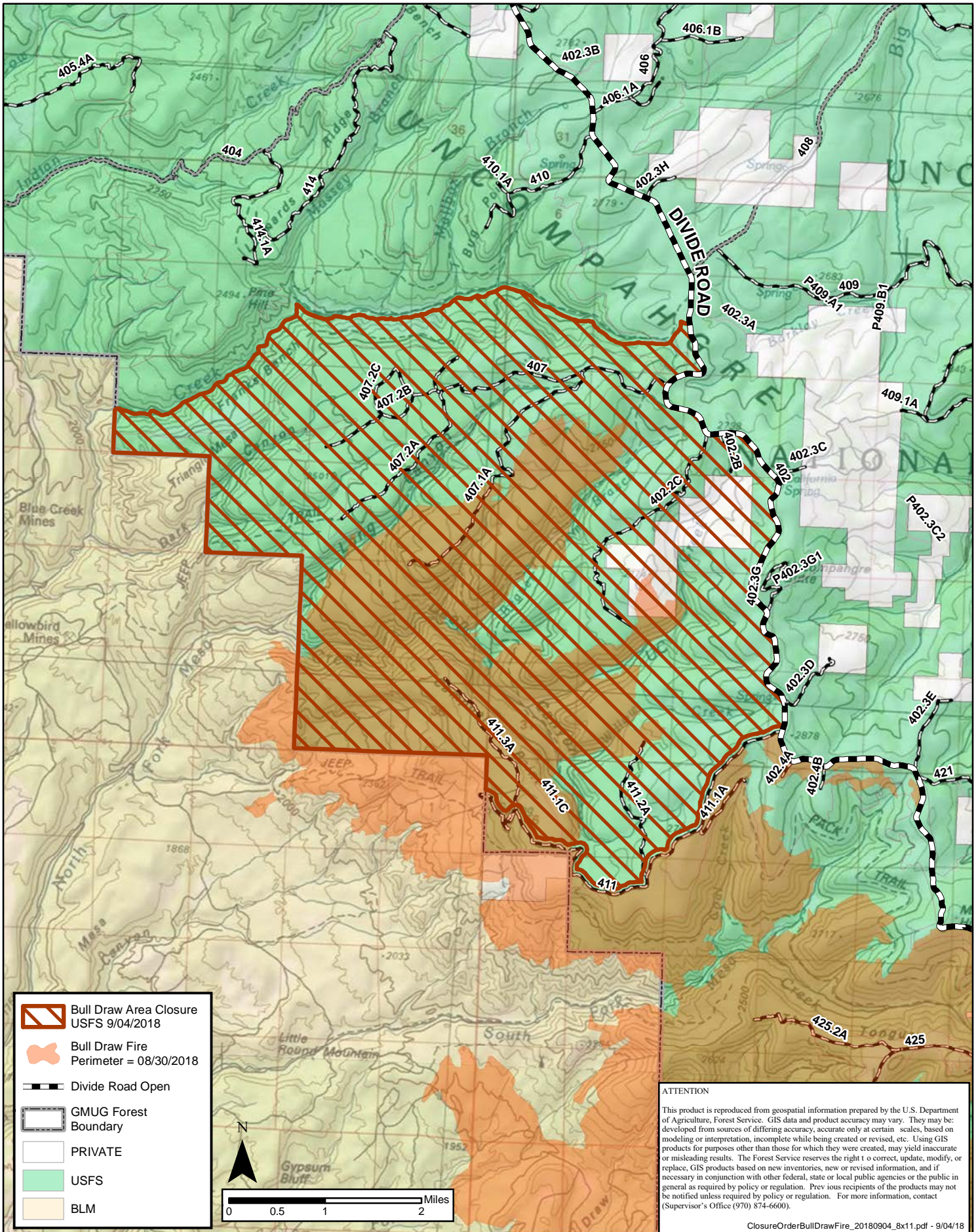
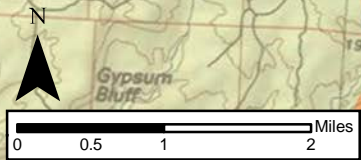


# Bull Draw Fire Emergency Closure Order

USDA - FS - Grand Mesa, Uncompagre and Gunnison National Forests  
 Grand Valley and Norwood Ranger Districts  
 Order: GMUG-2018-16



- Bull Draw Area Closure  
USFS 9/04/2018
- Bull Draw Fire  
Perimeter = 08/30/2018
- Divide Road Open
- GMUG Forest  
Boundary
- PRIVATE
- USFS
- BLM



**ATTENTION**

This product is reproduced from geospatial information prepared by the U.S. Department of Agriculture, Forest Service. GIS data and product accuracy may vary. They may be developed from sources of differing accuracy, accurate only at certain scales, based on modeling or interpretation, incomplete while being created or revised, etc. Using GIS products for purposes other than those for which they were created, may yield inaccurate or misleading results. The Forest Service reserves the right to correct, update, modify, or replace GIS products based on new inventories, new or revised information, and if necessary in conjunction with other federal, state or local public agencies or the public in general as required by policy or regulation. Previous recipients of the products may not be notified unless required by policy or regulation. For more information, contact (Supervisor's Office (970) 874-6600).